



Experience tomorrow's home entertainment today with the luxuriously appointed DTR-30.6 Boasting latest HDMI\* and HDCP 2.2, this state-of-the-art A/V hub adds high-impact sound to the latest 4K/60 Hz games and video.

\* Supports 4K/60 Hz video transmission based on HDMI specification.

### ADVANCED FEATURES

- 4K / 60 Hz-Capable HDMI® Terminals for Ultra HD Entertainment\*<sup>1</sup>
- Supports HDCP 2.2 for Future 4K/Full HD Video Streaming and Broadcast\*<sup>2</sup>
- HDMI® Video Upscaling to 4K with Qdeo™ Processing Technology by Marvell
- Wi-Fi® Certified Wireless LAN Capability
- Bluetooth Version 2.1 + EDR Capability (Compatible Profile: A2DP v1.2, AVRCP v1.3)
- HDMI Support for 4K / 60 Hz, 3D, Audio Return Channel, DeepColor™, x.v.Color™, LipSync, Dolby® TrueHD, DTS-HD Master Audio™, DVD-Audio, Super Audio CD, Multichannel PCM, and CEC
- Proprietary AccuEQ Room Calibration with Mic Included
- ISF (Imaging Science Foundation) Video Calibration for Optimal Video Performance
- Picture-in-Picture Input Video Preview with InstaPrevue™ Technology
- Frontside MHL™ for 1080p Video and Stills from Smartphone and Tablet
- PM(Phase-Matching) Bass Boost for Deep Bass and Clear Mid-Range
- Dual 32-Bit Digital Signal Processing Engines
- TI Burr-Brown 192 kHz / 24-Bit DAC (8 Channels x 1)
- Three-Stage Inverted Darlington Circuitry for Front and Center Channels
- Fully Discrete Output Stage Circuitry
- PLL (Phase Locked Loop) Jitter-Cleaning Circuit Technology for S/PDIF Audio
- Overlaid On-Screen Display (OSD) via HDMI with Quick Setup and Home Menu
- Internet Radio and Music Streaming Subscription Services Included (TuneIn Radio, Pandora®, Spotify, AUPeO!, and Deezer)\*<sup>3</sup>
- Playback Compressed, Lossless, and HD Audio via Local Network (MP3, WMA, WMA Lossless, FLAC, WAV, Ogg Vorbis, AAC, Apple Lossless, DSD 2.8 MHz / 5.6 MHz, LPCM\*<sup>4</sup>, and Dolby® TrueHD)
- Control and Stream with Free Integra Remote Apps for iPod touch® / iPhone®<sup>5</sup> and Android Devices\*<sup>6</sup>
- Certified with DLNA Version 1.5
- 7 HDMI Inputs (1 Front / 6 Rear) and 2 Outputs
- 4 DSP Modes for Gaming: Rock, Sports, Action, and RPG
- Hybrid Standby Function with HDMI Passthrough
- Compatible with RI Dock for iPod/iPhone and AirPlay (DMI-40.4)

<sup>1</sup> HDMI is supported on inputs 1/2/3/4, the frontside input, Main Out, and Sub Out. <sup>2</sup> HDCP 2.2 is supported on HDMI Input 3 and Main Out only. <sup>3</sup> Availability of services depends on region. Some services may require a paid subscription and firmware update. Availability of third-party services advertised here is accurate at the time of publication, but may be subject to change without notice. <sup>4</sup> LPCM is supported via DLNA only. <sup>5</sup> Compatible with iPod touch (3rd generation or later) and iPhone 3GS or later. All models require iOS 4.2 or later. <sup>6</sup> Requires Android OS 2.1 or later.

### OTHER FEATURES

- 160 W/Ch at 6 Ω, 1 kHz, 1 % THD, 1 Channel Driven, IEC
- WRAT (Wide Range Amplifier Technology)
- H.C.P.S. (High Current Power Supply) Massive High Power Transformer
- Optimum Gain Volume Circuitry
- Advanced Music Optimizer to Improve Compressed Digital Audio Quality (Bluetooth Included)
- Front Panel USB Port with Mass Storage Class USB Memory Playback Capability
- CinemaFILTER™
- Powered Zone 2 and Zone 2 Line-Out for Distributed Audio Playback in Another Room
- Crossover Adjustment for Each Channel (40 / 45 / 50 / 55 / 60 / 70 / 80 / 90 / 100 / 110 / 120 / 130 / 150 / 200Hz)
- A/V Sync Control (Up to 800 ms in 5 ms Steps at 48 kHz)
- HDTV-Capable (720p / 1080i) Component Video Switching (1 Input and 1 Output)
- 4 Composite Video Inputs and 1 Output
- 3 Digital Audio Inputs (1 Optical and 2 Coaxial)
- 7 Analog Audio Inputs
- Phono Input for Turntable Connection
- Color-Coded 7.2 Multichannel Pre Outs (Including 2 Subwoofer Pre Outs)
- Tone Control (Bass / Treble) for Front L / R Channels
- 3-Mode Display Dimmer (Normal / Dim / Dimmer)
- 40 FM/AM Random Presets
- Firmware Updates via Ethernet and USB
- Preprogrammed RI (Remote Interactive) Remote Control

### CUSTOM INTEGRATION FEATURES

- Bi-Directional Ethernet and RS232 Port for Control
- Independent Zone 2 Bass / Treble / Balance Controls
- Max & Power On Volume Settings for Main Zone & Zone 2
- Dealer Settings Memory Store & Recall with Lock / Unlock
- Dealer Settings Store & Recall via PC Software Capable
- 2 IR Inputs and 1 Output
- 3 Programmable 12V Triggers (with Adjustable Delay)
- Optional Rack Mount Kit Available (IRK-155-3C)
- Smart Grid-Ready
- RIHD (Remote Interactive Over HDMI) for System Control\*

\*Compatibility depends on respective model.



**HDMI**  
HIGH-DEFINITION MULTIMEDIA INTERFACE

**HDCP2.2**



**DOLBY**  
**TRUEHD**  
PRO LOGIC IIz

**dts-hd**  
Master Audio



**WRAT**  
WIDE RANGE AMP TECHNOLOGY



**PMBASS**

**AccuEQ**  
ROOM CALIBRATION



**WiFi**  
CERTIFIED

**Bluetooth**



**MHL**  
MOBILE HIGH-DEFINITION LINK

**NETWORK**

**dlna**  
CERTIFIED

**PANDORA**

**Spotify**

**DEEZER**

**AUPEO!**  
PERSONAL RADIO

**tunein**

**USB**

**RIHD**

**Theater-Dimensional**

**RI**

**ECO**

### SPECIFICATIONS

#### AMPLIFIER SECTION

Power Output All Channels:	160 W/Ch at 6 Ω, 1 kHz, 1 % THD, 1 Channel Driven, IEC
Dynamic Power	240 W (3 Ω, Front) 210 W (4 Ω, Front) 120 W (8 Ω, Front)
THD+N (Total Harmonic Distortion + Noise):	0.08 % (20 Hz–20 kHz, Half Power)
Damping Factor:	60 (Front, 1 kHz, 8 Ω)
Input Sensitivity and Impedance:	200 mV / 47 kΩ (Line) 2.5 mV / 47 kΩ (Phono MM)
Rated RCA Output Level and Impedance :	200 mV / 470 Ω (Pre Out)
Maximum RCA Output Level and Impedance :	4.6 V / 470 Ω (Pre Out)
Frequency Response:	5 Hz–100 kHz / +1 dB, -3 dB (Direct Mode)
Tone Control :	±10 dB, 30 Hz (Bass) ±10 dB, 20 kHz (Treble)
Signal-to-Noise Ratio:	106 dB (Line, IHF-A) 80 dB (PHONO MM, IHF-A)
Speaker Impedance:	4 Ω–16 Ω, 6 Ω–16 Ω

#### VIDEO SECTION

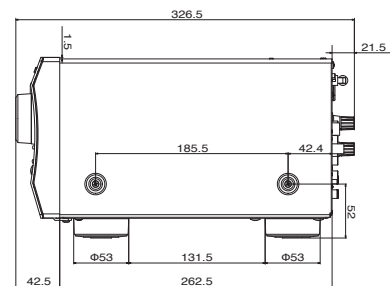
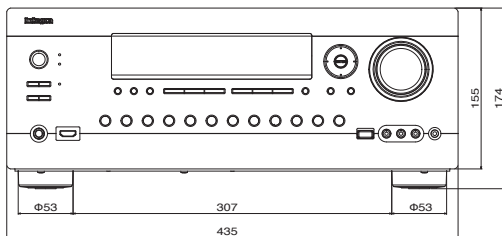
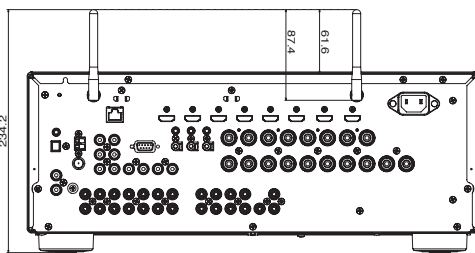
Input Sensitivity / Output Level and Impedance:	1.0 Vp-p / 75 Ohms (Component Y) 0.7 Vp-p / 75 Ohms (Component Pb / Cb, PR / CR) 1.0 Vp-p / 75 Ohms (Composite)
Component Video Frequency Response:	5 Hz–100 MHz / +0 dB, -3 dB

#### TUNER SECTION

Tuning Frequency Range:	FM 87.5 MHz–108 MHz AM 522 / 530 kHz–1,611 / 1,710 kHz
FM/AM Preset Memory:	40 stations

#### GENERAL

Power Supply:	AC 220–240 V~, 50 / 60 Hz
Power Consumption:	630 W
No-Sound Power Consumption:	75 W
Stand-by Power Consumption:	0.15 W
Dimensions (W x H x D):	435 x 174 x 326.5 mm
Weight:	10.5 kg
<b>CARTON</b>	
Dimensions (W x H x D):	570 x 297x 423 mm
Weight:	13.0 kg



Due to a policy of continuous product improvement, Onkyo reserves the right to change specifications and appearance without notice. Manufactured under license from Dolby Laboratories. Dolby, Pro Logic, and the double-D symbol are trademarks of Dolby Laboratories. For DTS patents, see <http://patents.dts.com>. Manufactured under license from DTS Licensing Limited. DTS, DTS-HD, the Symbol, & DTS and the Symbol together are registered trademarks, and DTS-HD Master Audio is a trademark of DTS, Inc. © DTS, Inc. All Rights Reserved. HDMI, the HDMI logo, and High-Definition Multimedia Interface are trademarks or registered trademarks of HDMI Licensing LLC in the United States and other countries. iPhone, iPod, iPod classic, iPod nano, iPod shuffle, and iPod touch are trademarks of Apple Inc., registered in the U.S. and other countries. Apple is not responsible for the operation of this device or its compliance with safety and regulatory standards. Please note that the use of this device with iPod or iPhone may affect wireless performance. Android is a trademark of Google Inc. InstaPrevue logo are trademarks or registered trademarks of Silicon Image, Inc. in the United States and other countries. MHL, the MHL Logo, and Mobile High-Definition Link are trademarks or registered trademarks of MHL LLC in the United States and other countries. Qdeo and QuietVideo are trademarks of Marvell or its affiliates. The Bluetooth word mark and logos are owned by the Bluetooth SIG, SIRIUS, XM and all related marks and logos are trademarks of SIRIUS XM Radio Inc. and its subsidiaries. Inc. WRAT, Music Optimizer, CinemaFILTER, Theater-Dimensional, and AccuEQ are trademarks of Onkyo Corporation. All other trademarks and registered trademarks are the property of their respective holders.